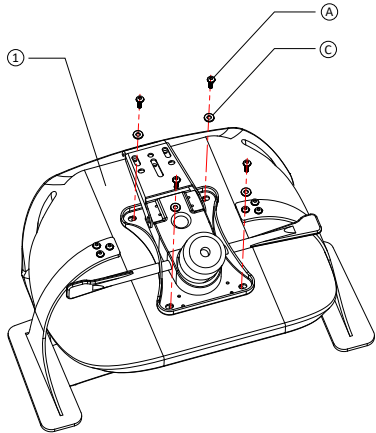
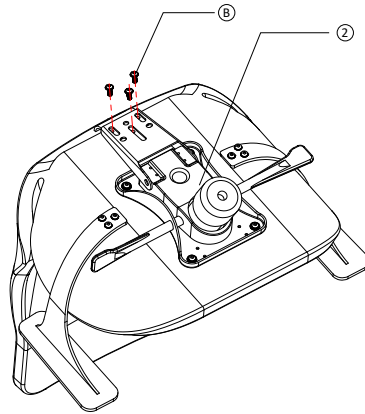


# ASSEMBLY INSTRUCTION

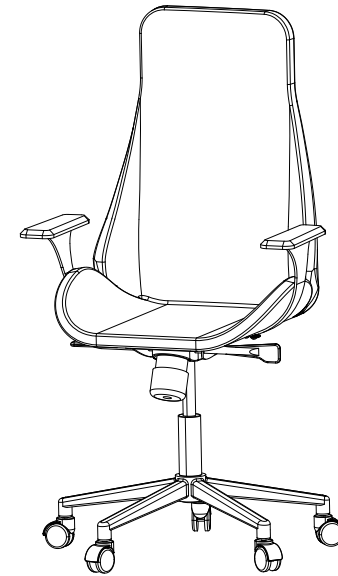
Remove all items from the carton. Verify all pieces before assembly.



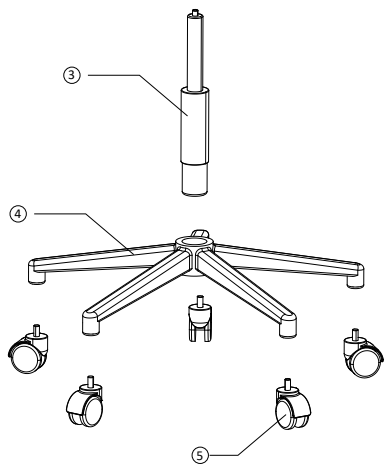
STEP 1



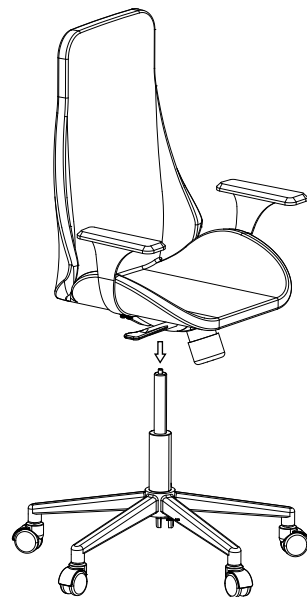
STEP 2



FINISH

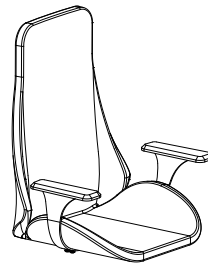


STEP 3

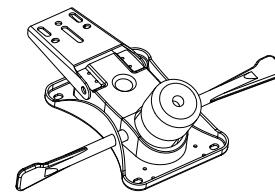


STEP 4

① Back & Seat & Armrest



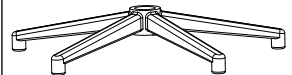
② Mechanism



③ Gas Lift



④ Base



⑤ Casters - x5



Accessories & Tools

① A  
M6\*25MM - x4



② B  
M8\*20MM - x3



③ C  
x4



④ D  
M6 - x1



⑤ E  
M8 - x1

